



SAUDI LABS
المختبرات السعودية
Since 1982

Geotechnical | Geophysical | Laboratories Testing Services

Company Profile - Year (2024-25)



Contacts

Tel: (+966) 11-4777473
Tel: (+966) 11-4767752
Email: info@saudilabs.com.sa

Address

Saudi Labs Ltd.
Jarir Street, Al-Malaz District,
P.O. 6003, Riyadh 11442, KSA

website: www.saudilabs.com.sa

About Us

- **Established in 1982**, Saudi Laboratories Company Limited (SLL) is a trusted leader in **Geotechnical, Geophysical, and Laboratory Testing Services** in Saudi Arabia.
- With **over 40 years of experience**, SLL has contributed to some of the Kingdom's most prestigious projects, **delivering tailored solutions to both public and private sectors**.
- Our expertise spans across **Geotechnical Engineering, Foundation Assessments, Structural Evaluations, Geophysical Surveys, Micro-piling, Topographical Surveys** and **Physical & Chemical Material Testing Services**.
- We are committed to **quality, innovation, and excellence**, ensuring that our clients receive world-class services.



Our Services

Saudi Labs Co. Ltd. is a leading multidisciplinary engineering company in Saudi Arabia, offering a wide range of services across Geotechnical Engineering, Geophysical Investigations, and Comprehensive Laboratory Testing. As an ISO-certified organization, SLL is equipped with highly qualified professionals and advanced technologies, consistently providing reliable, high-quality solutions. Our services are designed to mitigate geotechnical risks and support the development of safe, stable, and efficient foundations for construction and infrastructure projects.

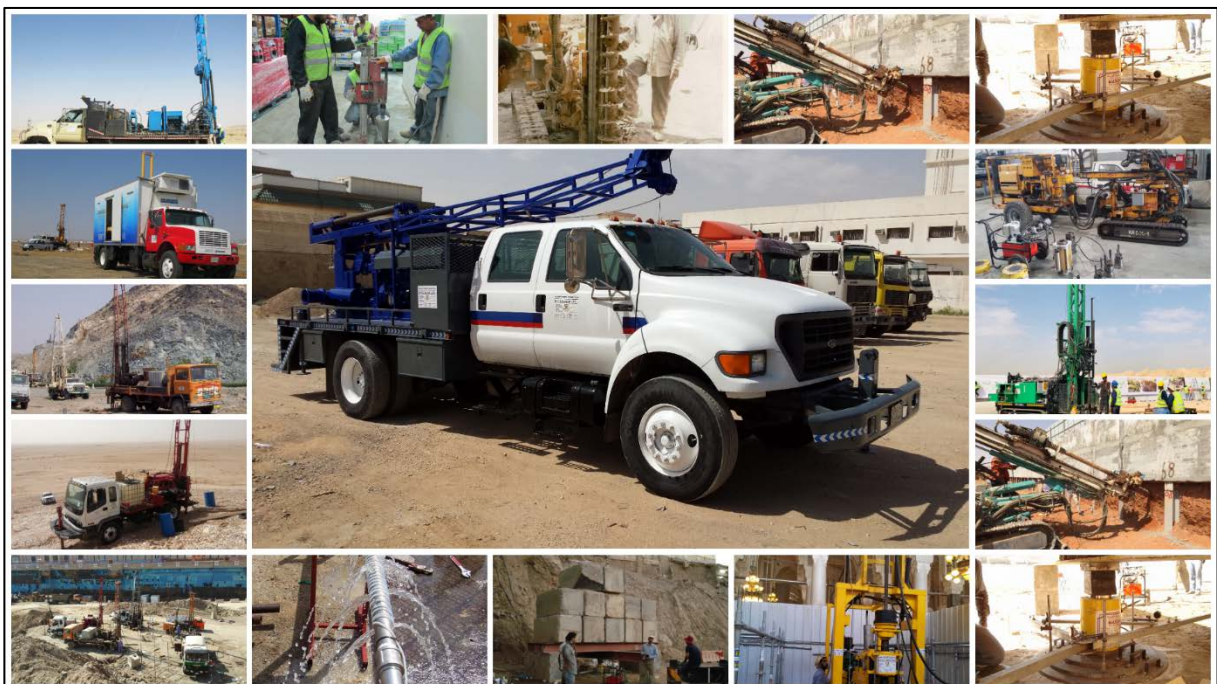
Our core services include.



Geotechnical Engineering

SLL offers a comprehensive suite of Geotechnical Engineering services, supported by a team of experienced Engineers, Geologists, and Technicians. Their core services include:

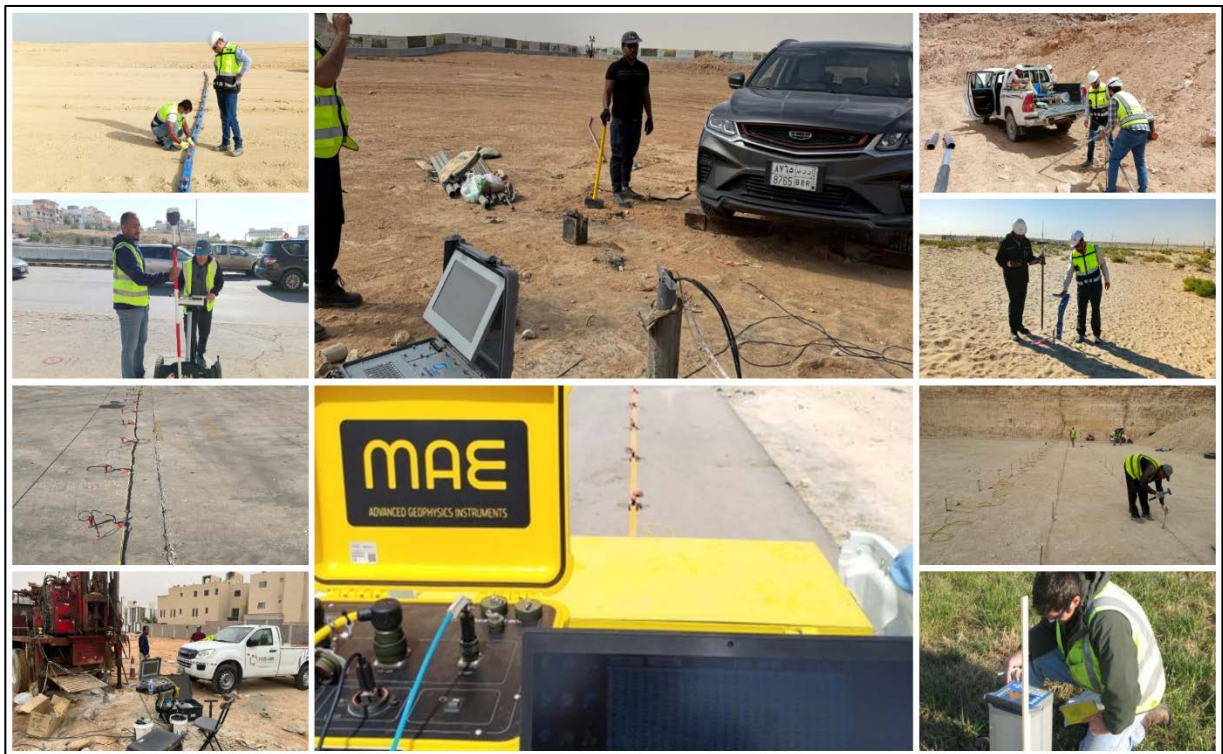
- **Geotechnical Investigation**
Exploration of subsurface soil and rock strata using cutting-edge drilling and geotechnical techniques, destructive and non-destructive.
- **Soil and Rock Mechanics**
Analysis of slope stability, ground improvement, and rock sliding issues.
- **Foundation Engineering**
Design and assessment of foundations, including on-site destructive and non-destructive testing of concrete and steel.
- **Geological and Hydrogeological Surveys**
Site investigations, mapping, material sampling, and testing for construction and mining projects, as well as water studies including permeability testing, water table analysis, and well supervision.
- **Structural Assessment and Design**
Evaluation and rehabilitation of damaged buildings, soil-structure interaction studies, and footing system design.
- **Grouting and Micro-piling**
Soil improvement and underpinning using advanced techniques like compaction grouting and mini piles.
- **Piling Works**
Execution of CFA and bored piles using modern hydraulic rigs and related equipment.



Geophysical Investigations

Saudi Laboratories Co. Ltd. provides a comprehensive range of geophysical survey services aimed at enhancing subsurface understanding for geotechnical, environmental, and construction applications. Our services include cavity and sinkhole detection, stratigraphic profiling, utility mapping, and foundation investigations, using a wide array of advanced techniques such as.

- Electrical Resistivity Tomography (ERT)
- Multi-Channel Analysis of Surface Waves (MASW)
- Cavity Volume Estimation-3D
- Ground Penetrating Radar (GPR) & Radio Detection
- Seismic Refraction Survey
- Down-hole & Cross-hole Seismic
- Cross-hole Tomography
- Vertical Electrical Sounding (VES)
- Time Domain Electromagnetic Surveys
- Soil Resistivity Test
- Sonic Echo/Impulse Response
- Thermal Resistivity
- Ultrasonic Tests
- PS, OPTV, HRAT Logging
- Microgravity Survey



Laboratory Testing Services

- **Soil Testing**

Comprehensive physical (e.g., Atterberg limits, permeability, shear strength, consolidation) and chemical analysis (e.g., pH, sulphates, chlorides, organic matter).

- **Rock Testing**

Physical properties such as uniaxial compressive strength, point load index, triaxial strength, and chemical composition.

- **Aggregate Testing**

Full range of physical tests (sieve analysis, L.A. abrasion, flakiness, elongation) and chemical properties including alkali reactivity.

- **Concrete Testing**

Strength tests on cubes, cylinders, blocks; core cutting and testing; complete mix design and trial batching procedures.

- **Cement Testing**

Setting time, fineness, soundness, compressive strength, loss on ignition, and full chemical analysis.

- **Asphalt Testing**

On-site sampling, bitumen content by extraction/ignition, Marshall stability, core analysis, and mix design.

- **Water Testing**

Chemical properties including pH, sulphates, chlorides, total dissolved solids, and various cations/anions.

- **Thermal & Electrical Properties**

Tests like thermal conductivity and electrical conductivity for soil and other materials.



Structural Assessment & Rehabilitation

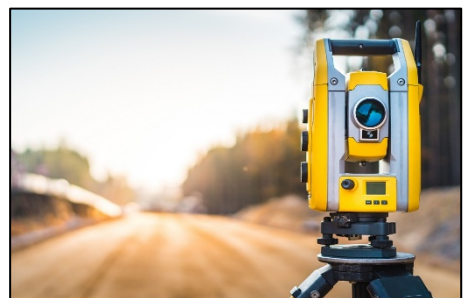
- Destructive Testing
 - Coring
 - Sampling
 - Test Pits
- Non-Destructive Testing (NDT)
 - Ultrasonic Pulse Velocity (UPV) Testing
 - Half-Cell Corrosion Potential Testing
 - Concrete Carbonation & Schmidt Hammer Tests



Topographic Surveying & Mapping

Saudi Laboratories Company Limited offers a full range of surveying and mapping services designed to meet the diverse needs of infrastructure, construction, and development projects. Our expert team employs advanced techniques and technologies to ensure accuracy, efficiency, and precision in every project.

- Topographical survey
- GIS Mapping
- Corridor alignments and profiling
- Establishing survey control network
- Underground Utility Detection
- Earthwork Volume Calculation
- Traversing & Level Loop Survey
- Pipe Route Demarcation Survey
- Quantity / Volumetric Survey
- As-built surveys



Our Presence in Saudi Arabia

المملكة العربية السعودية

Kingdom of Saudi Arabia



- **Head Office:** Riyadh

- **Branch Offices:**

- Makkah
- Madinah
- Jeddah
- Al-Khobar

- **Warehouses & Workshops:**

- Riyadh
- Madinah
- Jeddah
- Al-Khobar

Notable Projects



Geotechnical & Geophysical Investigations for Masjid al-Haram Expansion Project, Phase III



Geotechnical Investigation for Masjid e-Nabwi, Expansion Project, Phase III, Madinah Al-Munawarah



Geotechnical Investigation for Rua Al Madinah Project, Madinah Al-Munawarah



Geotechnical, Geophysical Investigations & Topo Services for Riyadh Exhibition & Convention Centre (RECC)



Geotechnical Investigation of Fairmont Ramla Residencial Tower - Riyadh



Subsurface Investigation for Abraj Kudai - Makkah



Geotechnical Investigation for Thakher
City Development Project - Makkah



Geotechnical Investigation for
King's Square Project - Riyadh



Geotechnical & Geophysical
Investigations for SABB H.Q Office
Building - Riyadh



Geotechnical Investigation for Jazan
Economic City - Jazan



Geotechnical Investigation & Quality
Control of Knowledge Economic City
(KEC) - Madinah



Subsurface Investigation for King
Salman Energy Park (SPARK)
Dammam

Sr. No.	Client Name	Project Type	Location	Year
1.	Jadwa Al Basateen	Geophysical Investigation	Riyadh	2025
2.	Branch Of China Harbour Engineering Co	Geotechnical Investigation	Riyadh	2025
3.	Delta Saudia	Laboratory Tests	Riyadh	2025
4.	Jadwa Al Basateen	Geotechnical Investigation	Riyadh	2025
5.	STC Dammam	Geotechnical Investigation	Dammam	2025
6.	Tesmec Saudi Arabia Co.	Laboratory Tests	Riyadh	2025
7.	Al Qasabi	Laboratory Tests	Riyadh	2025
8.	WestBay Contracting Company	Geotechnical Investigation	Riyadh	2025
9.	Al Mekyal Al Saudi	Geophysical Investigation	Riyadh	2025
10.	Abdullah Baltoyor Engineering Consultations.	Geophysical Investigation	Al-Khobar	2025
11.	Tesmec Saudi Arabia Co.	Geophysical Investigation	Riyadh	2024-25
12.	Quality Leaders	Laboratory Tests	Riyadh	2024-25
13.	Wadi Masharee Real Estate Finds	Geophysical Investigation	Riyadh	2024-25
14.	MUCC	Geophysical Investigation	Riyadh	2024-25
15.	Golden Touches Company	Geotechnical Investigation	Al-Khobar	2024-25
16.	MOBCO	Geophysical Investigation	Al-Khobar	2024-25

17.	RECC- Events Investment Fund- PIF	Geotechnical Investigation	Riyadh	2024-25
18.	Saudi Global Ports Co.	Geophysical Investigation	Dammam	2024-25
19.	HDD Project For SAR Crossing at Ali Bin Talib Road- AL FANAR Constructions	Geotechnical Investigation	Riyadh	2024-25
20.	HDD Project Saham Al Balady Constructions	Geotechnical Investigation	Riyadh	2024-25
21.	Gulf Projects Company	Geophysical Investigation	Riyadh	2024
22.	The Petroleum Projects & Technical Consultation (Project)	Geophysical Investigation	Dammam	2024
23.	Royal Highness Princess Hessa bint Mishal bin Abdulaziz	Geophysical Investigation	Riyadh	2024
24.	Deemah Factory	Geotechnical Investigation	Riyadh	2024
25.	MODON Al-Rawaf Contracting Co.	Geophysical Investigation	Dammam	2024
26.	Quality Leaders for Contracting Co.	Geophysical Investigation	Riyadh	2024
27.	TAN Project	Geotechnical Investigation	Riyadh	2024
28.	Kings Square Project-KAS	Geotechnical Investigation	Riyadh	2024
29.	Al Hammadi Holding Co.	Geophysical Investigation	Riyadh	2024
30.	Hyder & Solaiman Elkhareiji	Geophysical Investigation	Riyadh	2024

31.	Rafal Real Estate Development	Geophysical Investigation	Riyadh	2024
32.	Al Muhra Housing Project- Maskan Arabia	Geotechnical Investigation	Riyadh	2024
33.	Gadwa Al-Basateen Co.	Geophysical Investigation	Riyadh	2024
34.	Al Mekyal Al Saudi	Geophysical Investigation	Riyadh	2024
35.	Mosque Project-Oroub Investment Company	Geotechnical Investigation	Riyadh	2024
36.	CO-Liv Tower Project- RAFAL	Geotechnical Investigation	Riyadh	2024
37.	Sahm Balady contracting co. (Railway)	Geotechnical Investigation	Riyadh	2024
38.	SEDRA_ China HArbour Company	Geotechnical Investigation	Riyadh	2024
39.	RDP TD REY – Dry port Services Company Ltd	Geotechnical Investigation	Dammam	2023
40.	Taq Facilities at King Salman Energy Park (SPARK) City	Geotechnical Investigation	Dammam	2023
41.	ACWA Power New HQ Office	Geotechnical Investigation	Riyadh	2023
42.	Quality Control, Lot # 4060, Central Madinah	Geotechnical Investigation	Madinah	2023
43.	Soil Tests for Mining Project	Geotechnical investigation	Al Bisha	2023
44.	Ultrasonic quality tests - for repaired tunnels	Geophysical investigation	Makkah	2023
45.	Dhana Bay Beach Project	Geotechnical Investigation	Dammam	2023

Our Clients

Saudi Labs Ltd. is a trusted partner for leading government agencies, construction firms, and private developers. Some of our esteemed clients include municipal authorities, construction giants, and engineering consultancies.



NEW MURABBA





Contact Us

- **Head Office - Riyadh**
 - **Address:** Jarir Street, Al-Malaz District, Riyadh
 - **Phone:** (+966) 11-4777473
 - **Email:** info@saudilabs.com.sa
- **Regional Offices:** Jeddah, Makkah, Madinah, Al Khobar
 - Makkah Office:**
 - **Phone:** (+966) 12-5203856
 - Madinah Office:**
 - **Phone:** (+966) 14-8463822
 - Jeddah Office:**
 - **Phone:** (+966) 12 657 3927
 - Al-Khobar Office:**
 - **Phone:** (+966) 50 381 1850
- **Website:** www.saudilabs.com.sa

